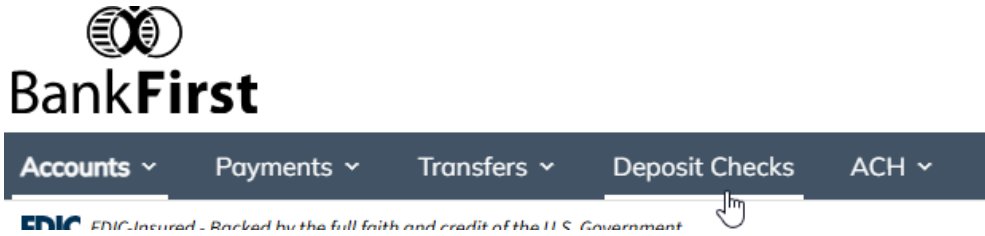


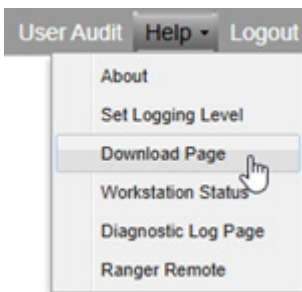
REMOTE DEPOSIT CAPTURE SCANNER INSTALLATION DRIVER GUIDE

The following steps should be performed on each workstation that will have access to the scanner:

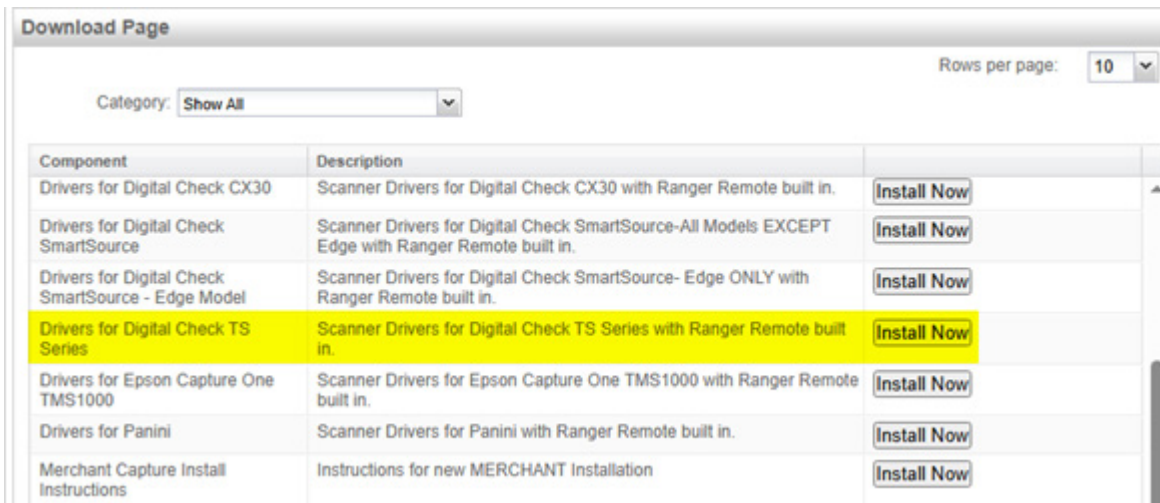
1. Log in to the computer using an Administrator account.
2. Unplug the scanner from the computer (the power cord can remain plugged in).
3. Log in to Digital Banking and select “Deposit Checks”. **Note:** you may need to enable pop-ups in your browser to launch the Web Capture site.



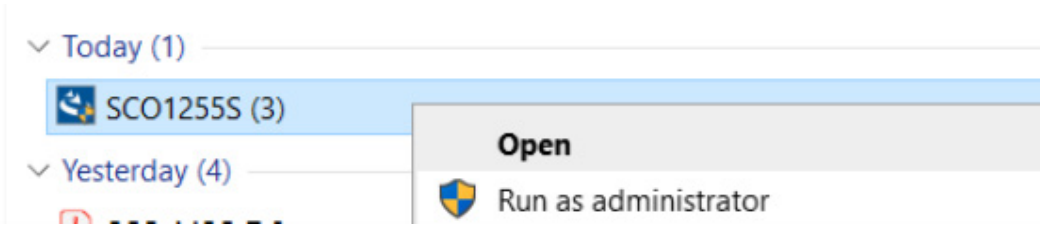
4. Select “Help”, then select “Download Page”.



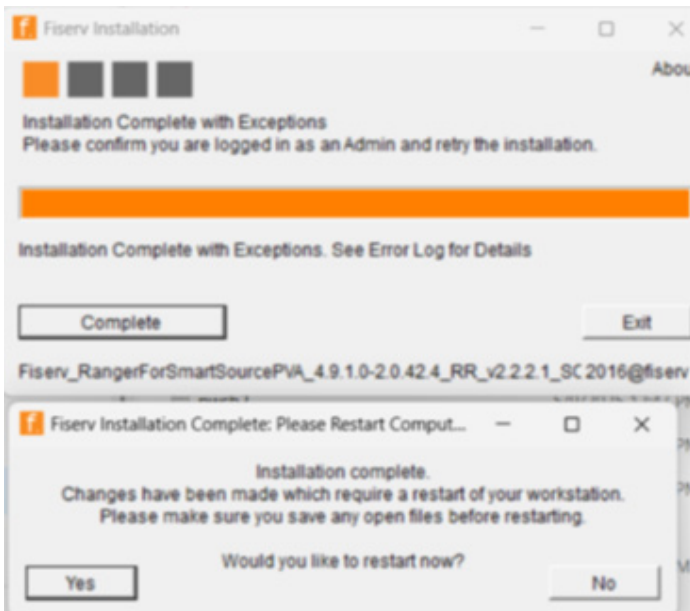
5. Select “Install Now” next to “Drivers for Digital Check TS Series” (scroll down if you do not see it).



6. Open the Downloads folder, right-click the driver executable, and select “Run as Administrator”.



7. Follow the prompts to complete the installation.
 - a. Prompts may vary by computer.
 - b. If prompted by Microsoft Defender, select “More info”, then “Run anyway”.
8. When the installation is complete, you will see prompts similar to the following. Select “Complete”, then “Yes” to restart the computer.



9. Once the computer has restarted, plug the scanner into the USB port.
10. You are now ready to use your scanner.

Questions? Please contact Bank First’s Treasury Management Support Team:
(920) 652-3515 | treasurymanagement@bankfirst.com

